

Seminola Development

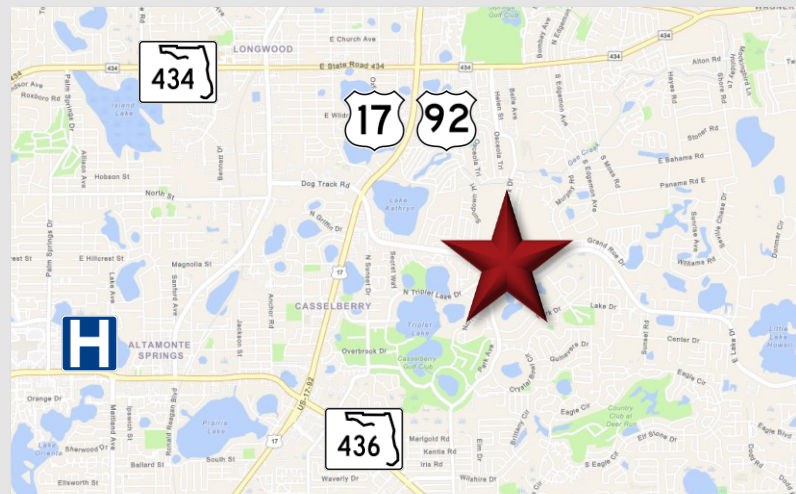
Seminola Blvd. Casselberry, FL 32707

 **Palkiper**
Commercial Real Estate Services



LOCATION DETAILS

This site is located on Seminola Blvd just east of N Winter Park Dr with a daily traffic count of 24,000 cars per day. Across from 7-Eleven and Dollar Tree. Less than 2 miles from US Hwy 17-92 providing a quick commute to Altamonte Springs and Maitland.



PROPERTY DETAILS

- \pm 0.88 Acres
- \pm 92' Frontage on Seminola Ave
- Within the CS zoning district intended to accommodate various service commercial uses
- Previously approved for the construction of a 5,000 SF commercial building

2021 DEMOGRAPHICS

	1-MILE	3-MILE	5-MILE
Population	10,955	86,711	217,829
Average HH Income	\$72,427	\$79,113	\$93,743
Median HH Income	\$56,181	\$60,358	\$67,165

CONTACT FOR MORE INFORMATION

Marie Shorey, CCIM

(407) 383-8142

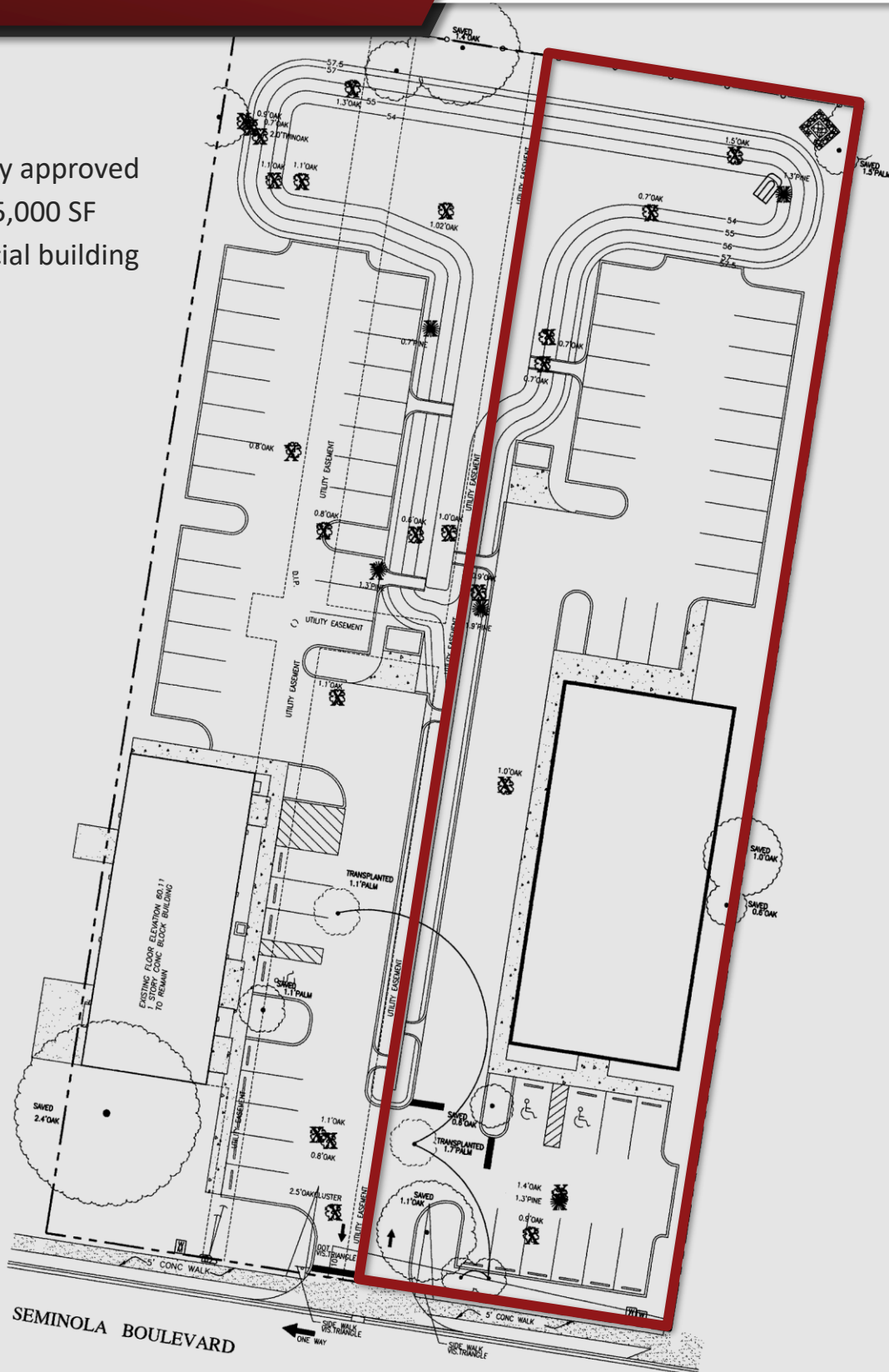
marie@palkiper.com

Seminola Development

Seminola Blvd. Casselberry, FL 32707

 **Palkiper**
Commercial Real Estate Services

Previously approved
for a 5,000 SF
commercial building



CONTACT FOR MORE INFORMATION

Marie Shorey, CCIM

(407) 383-8142

marie@palkiper.com